



**INSTALLATION AND MAINTENANCE**  
**INSTRUCTIONS FOR TOILET FRAMES**

Revision 4

Dated 29 May 2003



## **Fitting and Maintenance instructions**

### **Toilet Frames**

**N.B.** This equipment must be installed by a competent installer/ technician.

Instructions for:

Cosby Lux Toilet Seat and Frame	165Kg (26st.) weight limit
Ashby Lux Toilet Seat and Frame	165Kg (26st.) weight limit
Solo Companion Toilet Seat & Frame	159Kg (25st.) weight limit
Solo Skandi Toilet Seat and Frame	127Kg (20st.) weight limit
Ashford Toilet Frame	190Kg (30st.) weight limit
Broadstairs Toilet Frame	190Kg (30st.) weight limit

**Do not** exceed the weight limits stated; doing so may put the user at **risk**.

#### **1. All Toilet Frames**

Please examine your toilet frame, seat\* and plastic arms\* (\*if applicable) for any visible damage before installing. If you see any damage or suspect any fault, **please do not install or use**. Installation of **faulty equipment may compromise the safety of the user**.

#### **2. Adjusting free standing frame**

Carefully remove all four 'E' clips and extend the legs to the desired height, ensuring that you do not extend beyond the last hole of the leg and that all four legs are sitting evenly onto the floor. (see *fig. 1*)

Re-fix all four 'E' clips ensuring that all clips have passed through the frame and extension leg. (see *fig. 2*)

#### **3. Adjustment of floor-fixed legs**

All Aidapt toilet frames can be adjusted for height. The **Broadstairs** Toilet Frame can also be adjusted by its width.

To adjust your extension legs, firstly remove the 'E' clips from the tubes and pull all the extension legs downwards to the desired length (*see fig 1a*) and reinstall the clip ensuring that the clip has passed through the tube and fits snugly around the frame (*see fig 2a*). However **do not** exceed the maximum height adjustment, which is 150mm measured from the lowest position of the extension legs with pin clip fitted to the top of the frame.

**N.B.** Always adjust legs evenly, **never angle the frame, as this is dangerous and will compromise the safety of the user.**

#### **4. Fitting of floor fixing kits (extension legs supplied separately)**

In some instance it will be necessary for you to install extension legs that can be permanently fixed to the floor. If so, please carefully read the following instructions.

Firstly remove the standard extension legs if fitted by removing the 'E' clips. Install the floor fixing legs to the desired height and re-install 'E' clips ensuring that the 'E' clip has passed through the frame and fits snugly around the tube.

However **do not** exceed the maximum height adjustment which is 150mm measured from the lowest position of the extension leg with the pin clip fitted to the top of the frame.

The base of the floor kit is normally in the shape of a 'T' and is counter sunk. All fixing kits are designed for size 10 screws, however it should be fixed to the floor securely using a suitable fixing designed for the surface.

Installation must be carried out by a competent installer/ technician; **failure to do so may compromise the safety of the user.**

## *Toilet seats and frames continued...*

### **5. Testing the toilet frame**

**Always** test the toilet frame for stability/ fixing, double-checking that the legs have been adjusted equally before use.

### **6. Cleaning**

All of the components used in these products are manufactured from quality materials. However it is very important that you only clean them using a **non-abrasive cleaner** or **mild detergent** with a **soft cloth**. Abrasive cleaners e.g. AJAX and/ or abrasive cleaning pads will seriously damage your product beyond repair.

**The Cosby Lux and Ashby Lux** have clip on seats, these can be removed from the frame by easing off the toilet seat from the tube and the autoclave cleaning can take place.

The Ashby Lux and Cosby Lux **toilet seats (not frame)** can be cleaned using temperatures up to 120°C without damage.

**The Solo Companion, Solo Skandi, Ashford and Broadstairs Toilet Frames** must be cleaned using a mild detergent or disinfectant solution; **on no account** must you use any form of abrasive cleaner, which can seriously damage the equipment.

### **7. Reissue**

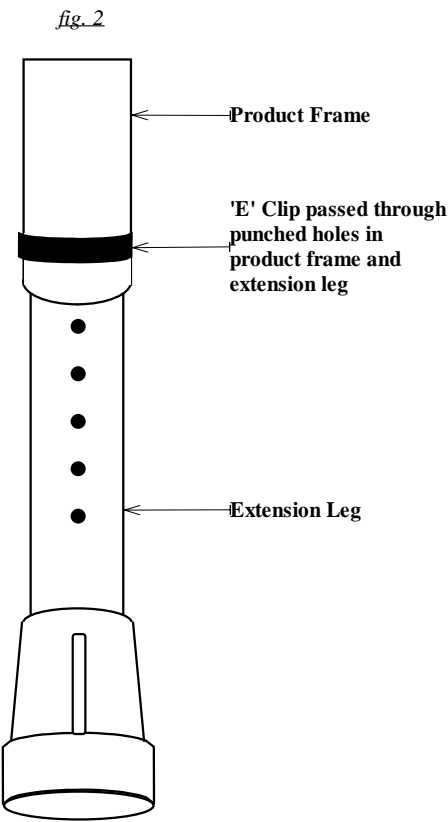
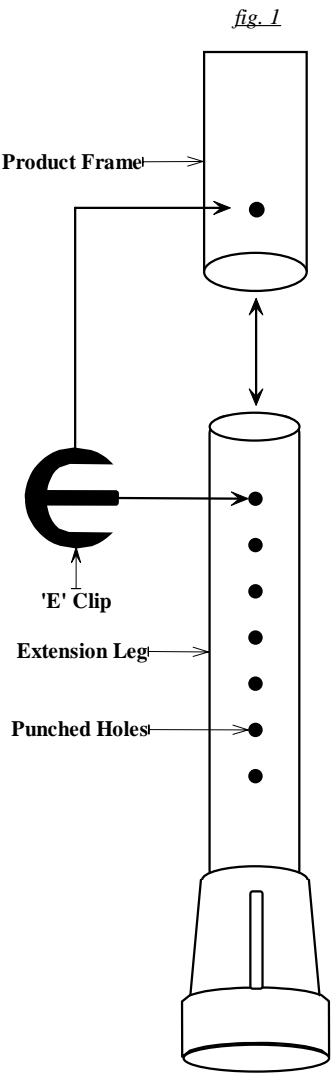
If you reissue or are about to reissue this product, please thoroughly check all components for their safety. This includes;

P.A.T. test for electrical items, tightness of all nuts/ bolts/ castors and other screw in/ bolt in/ push in components. Also check all upholstery for security, splits, etc.

If in any doubt, please do not issue or use, but immediately contact your supplier for service support.

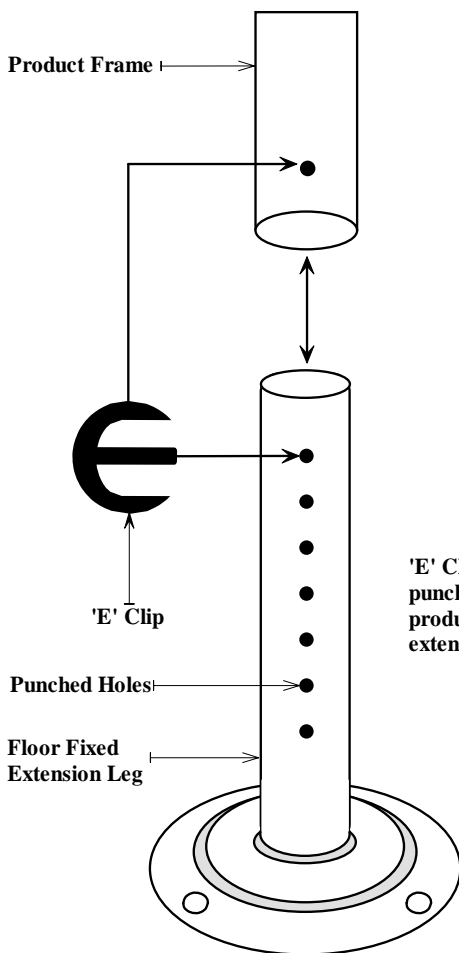
**Figures and Diagrams**

**Extension leg height adjustment Instructions**

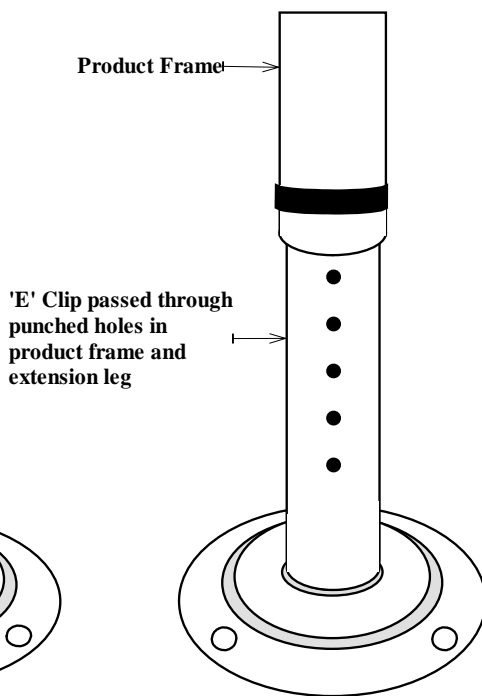


## Extension leg height adjustment Instructions

*fig. 1a*



*fig. 2a*



**Floor Fixed Foot**  
Please ensure that you  
use a fixing suitable for  
the surface you are  
installing the product  
on to.

### **Important Information**

The information given in this instruction booklet must not be taken as forming part of or establishing any contractual or other commitment by Aidapt Bathrooms Limited or its agents and no warranty or representation concerning the information is given.

All products, names and titles including the word Aidapt and the Aidapt logo are registered trademarks of Aidapt Bathrooms Limited.

All information and text contained herein remains the property of Aidapt Bathrooms Limited and is protected by copyright.

Any reproduction of an information or text contained herein will be considered a breach of copyright.